

GiliSoft USB Lock Temporary Password User Guide

1. First Installation and Configuration on Managed Computers

First, you need to install GiliSoft USB Lock on the managed computer. You can install the program via the command line and complete the control configuration. The command line is as follows:

```
gilisoft-usb-lock1080-vinsmartfuture.exe /verysilent /password=123456  
/license=vinsmartfuture /config="C:\YourPath\InstallConfig.ini"
```



Command Line Explanation:

- /verysilent: Runs the installer in silent mode (no user interaction).
- /password=: Enter the administrator password after the equal sign.
- /license=vinsmartfuture: Required registration license, no modification needed.
- /config=: Enter the path to the control configuration file after the equal sign (enclose in quotation marks). This item is optional—you can use InstallConfig.ini in the installer directory, and the installer will search for this file by default.

Command Line Example:

```
F:\Test>F:\Test\gilisoft-usb-lock1080-vinsmartfuture.exe /verysilent /password=123456 /license=vinsmartfuture|
```

Installation Package and Configuration:

 gilisoft-usb-lock1080-vinsmartfuture....	2025-11-19 19:15
 InstallConfig.ini	2025-11-19 17:20

Installation Configuration Settings:

[Setup]

DisableReadUSB = 1

DisableWriteUSB = 0

DisableSDReader = 0

DisablePhone = 0

DisableReadCD = 0

DisableBurnCD = 0

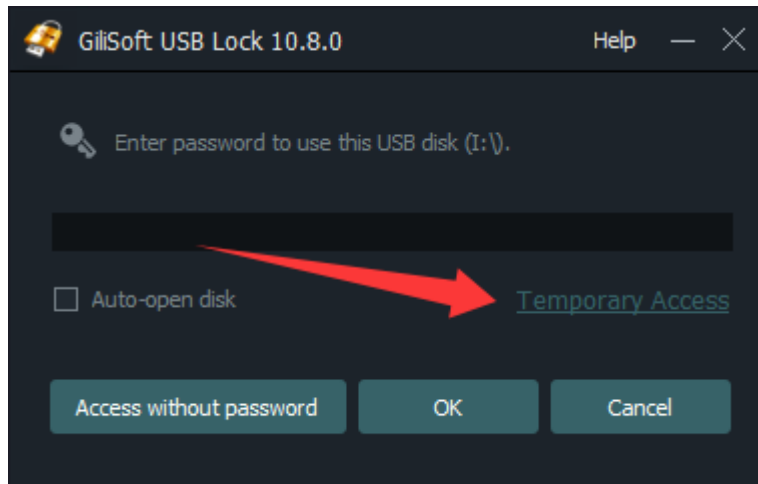
- Set to 1: Disable the corresponding function on the computer after installation.
- Set to 0: Do not disable the corresponding function.

Note: The computer needs to be restarted for all control settings to take effect.

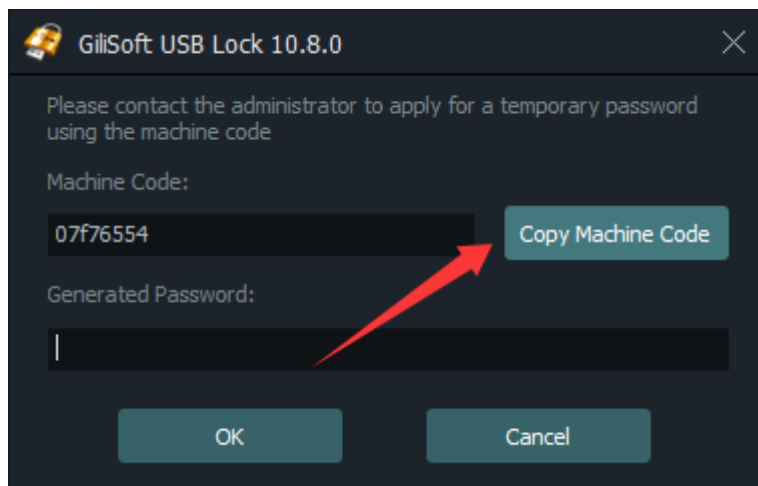
2. Access USB Drive with Temporary Password (For End Users)

After the managed computer restarts and the USB read/write restriction takes effect, inserting a USB drive will trigger a pop-up window requiring password verification. Follow these steps:

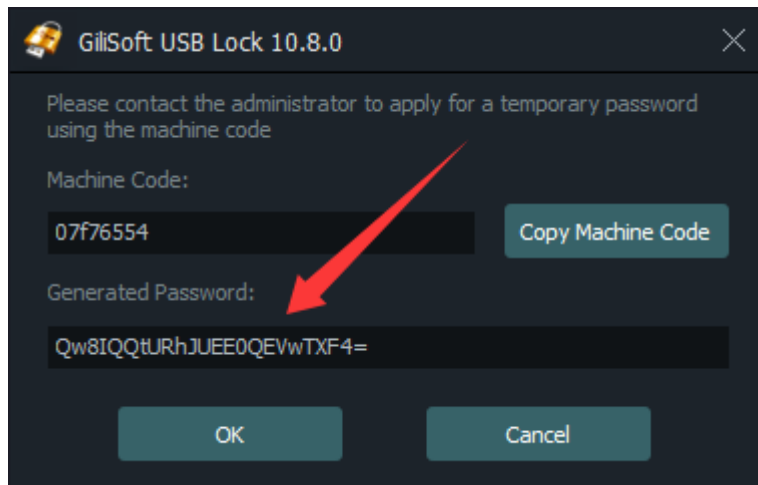
Click **Temporary Access** to use the temporary password for verification:



On the temporary password page, copy the machine code and send it to the administrator, then wait for the administrator to generate the temporary password:



Once you receive the temporary password from the administrator, enter it in the "Generated Password" box and click **OK** to access the USB drive:

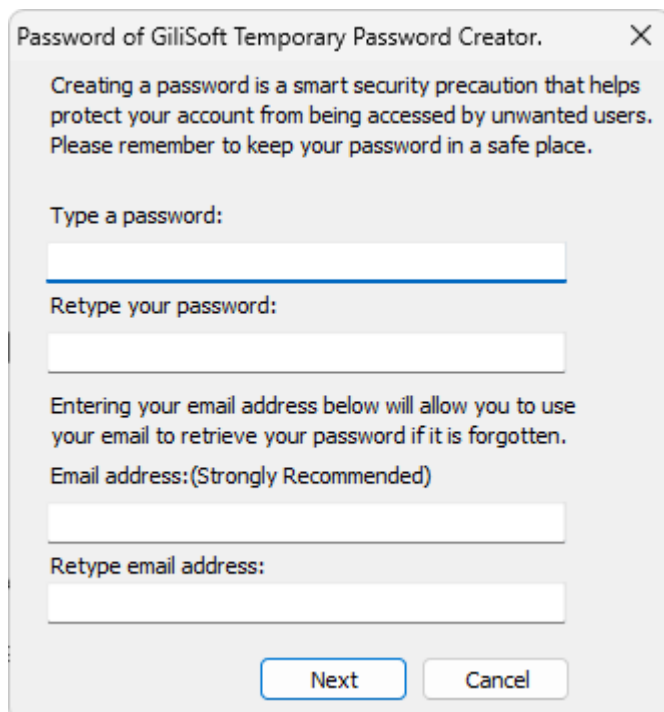


3. Generate Temporary Password (For Administrators)

Administrators must first install **GiliSoft USB Lock Temporary Password Creator** to generate temporary passwords. Note: This program is for administrators only and should be installed on the administrator's computer.

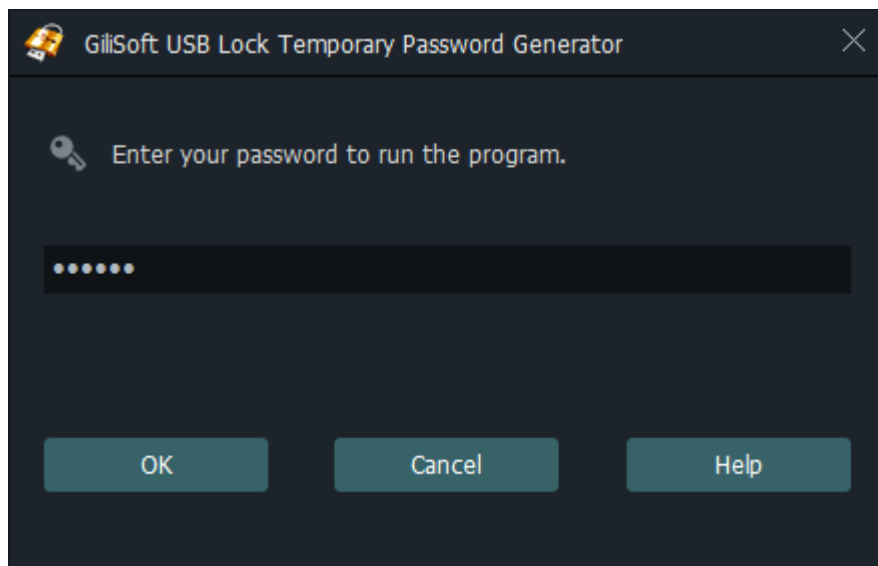
Installation Steps for Administrators:

During installation, set an administrator password and remember it. You will need to verify this password when using the password generator.

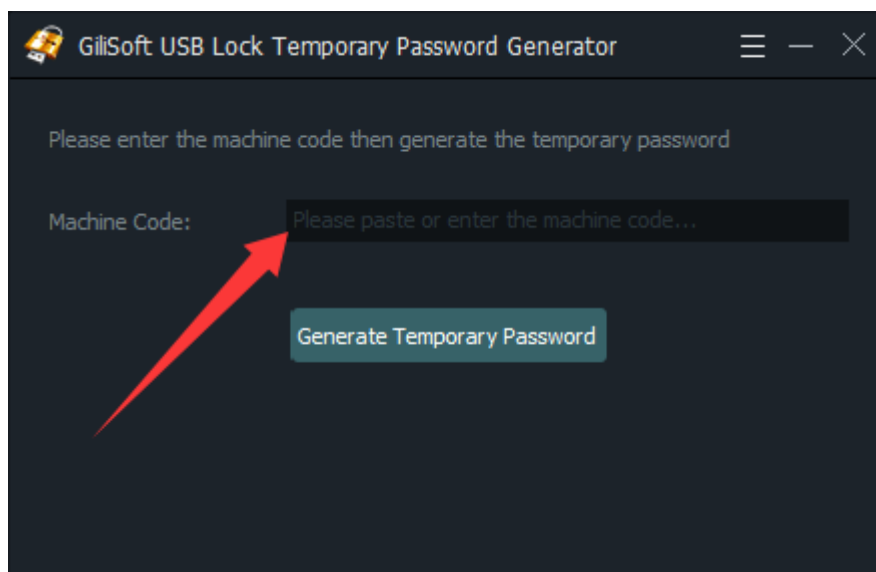


Steps to Generate Temporary Password:

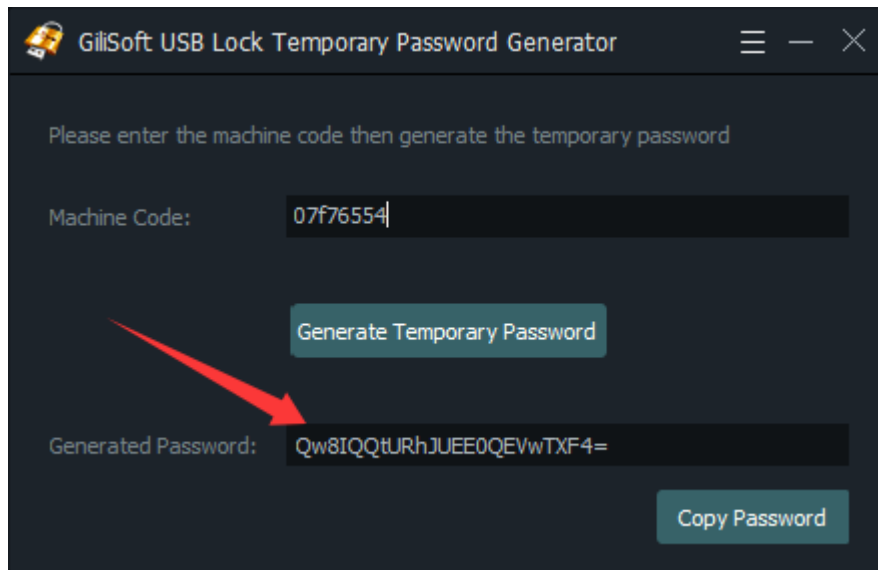
Launch the program and enter the password set during installation:



After password verification, enter the machine code provided by the managed computer:



After entering the machine code, click **Generate Temporary Password** to create the temporary password:



Provide the generated temporary password to the user of the corresponding managed computer.